

Conversion Adapter Anchor Base

Model

ERNT-QF12
ERNT-QF8
ERNT-QF5

User's Manual



50CM-D180092-C(2006)

MITSUBISHI ELECTRIC ENGINEERING COMPANY LIMITED
HEAD OFFICE : Hulic KUDAN BLDG.1-13-5, KUDANKITA CHIYODA-KU, TOKYO 102-0073, JAPAN
NAGOYA ENGINEERING OFFICE:139 SHIMOYASHIKIHO-SHIMOYASHIKI, KASUGAI, AICHI 486-0906, JAPAN

SAFETY PRECAUTIONS
(Always read these precautions prior to use.)

Before using this product, please read this manual carefully and pay full attention to safety to ensure that the product is used correctly. The precautions presented in this manual are concerned with this product only. For Programmable Controller system safety precautions, refer to the user's manual of the MELSEC-Q series CPU module to be used. In this manual, the safety precautions are ranked as "WARNING" and "CAUTION".

WARNING Indicates that incorrect handling may cause hazardous conditions, resulting in death or severe injury.

CAUTION Indicates that incorrect handling may cause hazardous conditions, resulting in medium or minor injury and/or property damage.

Note that failure to observe the CAUTION level instructions may lead to a serious consequence according to the circumstances. Always follow the precautions of both levels because they are important to personal safety. Please keep this manual in an easy-to-access location for future reference, and be sure to provide the manual to the end user.

Installation Precautions

WARNING

- Be sure to shut off all phases of the external power supply before performing installation work. Failure to do so could result in electric shock or product damage.

CAUTION

- Use the conversion adapter anchor base in an environment of the general specifications defined in the MELSEC-Q series CPU module user's manual. Failure to do so could lead to electric shock, fire, malfunction or product failure or deterioration.
- Fully secure the conversion adapter anchor base using the installation screws, and tighten the installation screws securely within the specified torque range. Failure to do so could cause the product to fall, resulting in damage.

Startup and Maintenance Precautions

WARNING

- Be sure to shut off all phases of the external power supply before cleaning and retightening the installation screws. Failure to do so could lead to electric shock. Excessively tightened screws could result in damage, causing the product to fall, a short circuit or product malfunction.

Disposal Precautions

CAUTION

- When disposing of the product, treat it as industrial waste.

安全注意事项
(使用前请务必阅读)

使用本产品时, 请仔细阅读本手册, 并充分注意安全, 正确地使用产品。本手册中标注的注意事项仅记载了与本产品相关的内容。关于可编程控制器系统的安全注意事项, 请参阅所使用的MELSEC-Q系列CPU模块的用户手册。在本安全注意事项中, 安全注意事项的等级分为「警告」和「注意」。

警告 表示错误操作可能造成危险后果, 引起死亡或重伤事故。

注意 表示错误操作可能造成危险后果, 引起中度伤害、轻伤及财产损失。

另外, 根据情况不同, 即使是「注意」中记载的事项, 也可能引发严重后果。不管哪个记载的都是非常重要的内容, 请务必遵守。请妥善保管本手册, 以便需要时取阅, 并将本手册交给最终用户。

【安装注意事项】

警告

- 必须将外部供应电源全相断开后再进行安装作业等。如果未全相断开, 可能会导致触电或产品损坏。

注意

- 应在MELSEC-Q系列CPU模块用户手册中记载的一般规格环境下使用转换适配器固定台。如果在一般规格范围以外的环境中使用, 可能导致触电、火灾、误动作、产品的损坏或劣化。
- 转换适配器固定台应通过安装螺栓切实地加以固定, 安装螺栓应在规定的扭矩范围内切实地拧紧。可能因掉落而导致破损。

【启动和维护注意事项】

警告

- 在清扫或重新紧固端子螺栓时, 必须将外部供应全相断开后再进行。如果未全相断开, 可能会导致触电。如果螺栓拧得过紧, 可能会导致掉落、短路或误动作。

【废弃注意事项】

注意

- 废弃时请将本产品作为工业废弃物处理。

1. Overview

This manual describes specifications, handling and other information on the Mitsubishi general-purpose Programmable Controller renewal tool Conversion Adapter Anchor Base (ERNT-QF12, ERNT-QF8, ERNT-QF5) that secures the bottom of the Conversion Adapter. Before attempting to make a switch from SYSMAC C Series to MELSEC-Q Series in your installation, consult the user's manual supplied with individual module under the latter series to learn about how they differ in various aspects including performance and function.

Once you have opened the packaging, verify that it contains the following products.

Product	Quantity
Conversion Adapter Anchor Base	1
Conversion Adapter Anchor Base installation screw (M4 x 8)	2
This manual	1

2. Product Specifications

The Conversion Adapter Anchor Base secures the bottom of the Conversion Adapter and is required for Conversion Adapter use. One anchor base is required per base.

Conversion Adapter Anchor Base Model	Specifications	
	Type	Weight (g)
ERNT-QF12	12-slot Conversion Adapter Anchor Base	620
ERNT-QF8	8-slot Conversion Adapter Anchor Base	435
ERNT-QF5	5-slot Conversion Adapter Anchor Base	290

3. Mounting and Installation

3.1 Handling Precautions

- Fully secure the conversion adapter anchor base using the installation screws, and tighten the installation screws securely within the specified torque range. Failure to do so could cause the product to fall, resulting in damage.
- Do not drop or apply heavy impact to the conversion adapter anchor base. Doing so could result in damage.

3.2 Installation Environment

The installation environment is the same as MELSEC-Q series CPU Module to use. Refer to the user's manual of the MELSEC-Q Series CPU Module to be used.

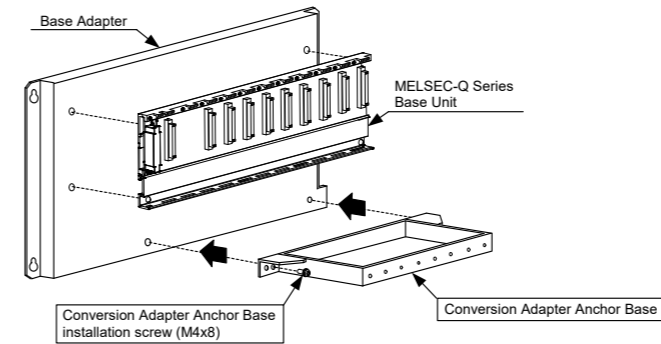
4. Installation Method

MELSEC-Q Series Base Unit Conversion Adapter Anchor Base	Q312B	Q38B	Q35B	Q33B	Q612B	Q68B	Q65B	Q55B
ERNT-QF12	◎	×	×	×	◎	×	×	×
ERNT-QF8	○	◎	×	×	○	◎	×	×
ERNT-QF5	×	○	◎	○	×	○	◎	◎

◎: Applicable
○: Applicable (with some restrictions: *1)
×: Not applicable
*1: There are certain slots in which the Conversion Adapter cannot be installed. For example, the Conversion Adapter cannot be installed in Slots 8 to 11 (4 slots) of the MELSEC-Q Series Base Unit when Q312B (MELSEC-Q Series Base Unit) is used with ERNT-QF8 (Conversion Adapter Anchor Base).

4.1 Installation with Base Adapter (Sold Separately)

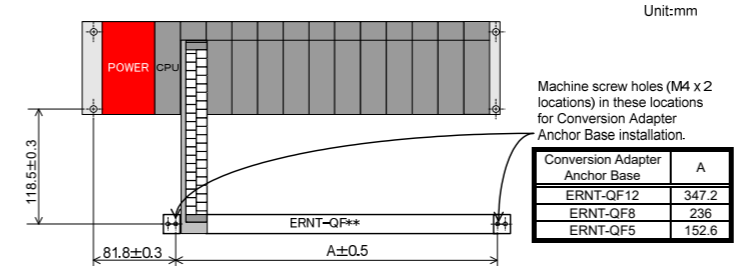
Screw hole machining (M4 × two positions) is not required to mount the Conversion Adapter Anchor Base. Use the screw holes of the Base Adapter to mount the Conversion Adapter Anchor Base. Refer to the instruction manual of the Base Adapter for the detail about the installation position.



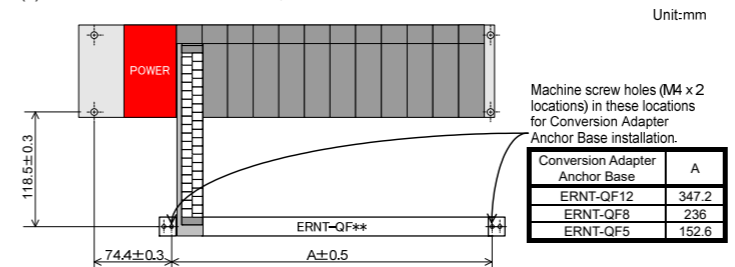
4.2 Installation without Base Adapter (Sold Separately)

Screw hole machining (M4 × two positions) is required to mount the conversion adapter anchor base.

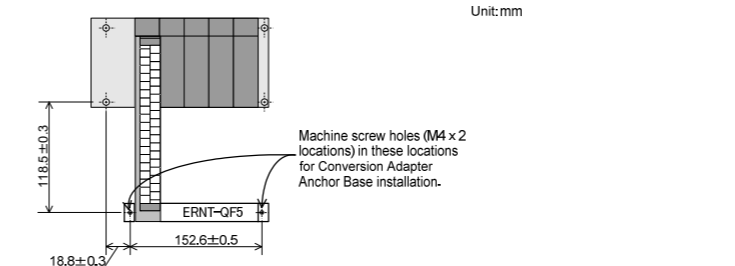
(1) With Main Base Unit Q312B, Q38B, Q35B or Q33B



(2) With Extension Base Unit Q612B, Q68B or Q65B



(3) With Extension Base Unit Q55B



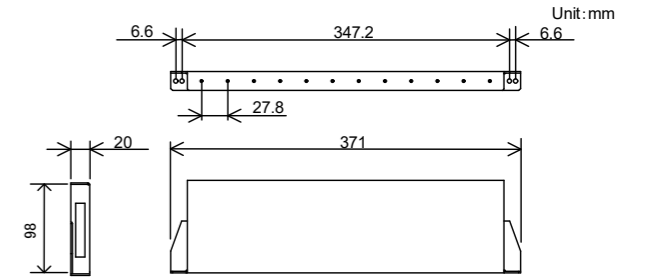
4.3 Tightening Torque

Tighten the installation screws to the specified torque below. An inappropriate tightening torque could cause the product to fall or result in a short circuit, product failure or malfunction.

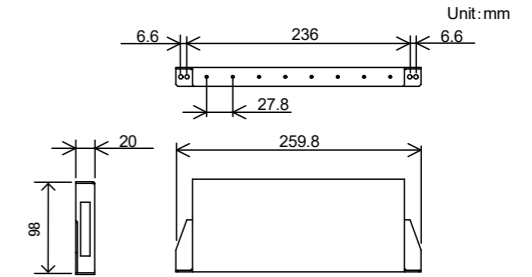
Screw Location	Tightening Torque Range
Conversion Adapter Anchor Base installation screw (M4 screw)	1.39 to 1.89N·m

5. External Dimensions

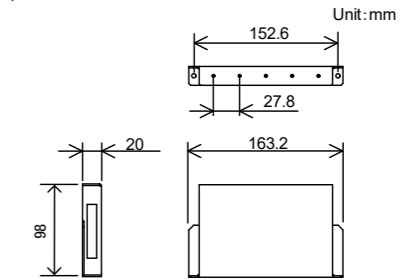
(1) ERNT-QF12



(2) ERNT-QF8



(3) ERNT-QF5



Duplication Prohibited
This manual may not be reproduced in any form, in part or in whole, without written permission from Mitsubishi Electric Engineering Company Limited.
©2014 MITSUBISHI ELECTRIC ENGINEERING COMPANY LIMITED ALL RIGHTS RESERVED

MELSEC is a registered trademark of Mitsubishi Electric Corporation.
SYSMAC is a registered trademark of Omron Corporation.

Product Warranty Details

Please confirm the following product warranty details prior to product use.

Gratis Warranty Terms and Gratis Warranty Range

If any fault or defect (hereinafter referred to as "Failure") attributable to Mitsubishi Electric Engineering Company Limited (hereinafter referred to as "MEE") should occur within the gratis warranty period, MEE shall repair the product free of charge via the distributor from whom you made your purchase.

Gratis Warranty Period

The gratis warranty period of this product shall be one (1) year from the date of purchase or delivery to the designated place. Note that after manufacture and shipment from MEE, the maximum distribution period shall be six (6) months, and the gratis warranty period after manufacturing shall be limited to eighteen (18) months. In addition, the gratis warranty period for repaired products shall not exceed the gratis warranty period established prior to repair.

Gratis Warranty Range

The gratis warranty range shall be limited to normal use based on the usage conditions, methods and environment, etc., defined by the terms and precautions, etc., given in the instruction manual, user's manual and caution labels on the product.

Warranty Period after Discontinuation of Production

- MEE shall offer product repair services (fee applied) for seven (7) years after production of the product has been discontinued. Discontinuation of production shall be reported via distributors.
- Product supply (including spare parts) is not possible after production has been discontinued.

Exclusion of Opportunity Loss and Secondary Loss from Warranty Liability

Regardless of the gratis warranty period, MEE shall not be liable for compensation for damages arising from causes not attributable to MEE, opportunity losses or lost profits incurred by the user due to Failures of MEE products, damages or secondary damages arising from special circumstances, whether foreseen or unforeseen by MEE, compensation for accidents, compensation for damages to products other than MEE products, or compensation for other work carried out by the user.

Changes in Product Specifications

The specifications given in the catalogs, manuals and technical documents are subject to change without notice.

This document is a new publication, effective June 2020. Specifications are subject to change without notice.