

**Develop a sustainable future
supported by technology.**

Pioneering a new path together

Since our establishment in 1962, we have been engaging in the development and design of a wide range of products and systems in various business fields, ranging from the household appliances to space technology of the Mitsubishi Electric Groups.

Our company has continued to grow and thrive in these areas of expertise. Our company's assets are our technological know-how and our highly skilled human resources. Our 5,000-plus engineers with various specialized skills collaborate and utilize their accumulated expertise and resources across the company to deliver products and services that meet various customer needs. Through diverse connections and collaborations within and outside our organization, we open up new possibilities and futures and contribute to the realization of an active and prosperous society.

Yuzuru Saito, President

Technologies we have developed as "technical partner" of Mitsubishi Electric Corporation

Our business fields

- Space
- Defense
- Information and telecommunications
- Power
- Public utilities
- Industrial technologies
- Buildings
- Traffic
- Factory automation
- Mechatronics
- Automobiles
- Living environment

Core technologies serving as our business foundations

- Electronic circuits
- Mechanical design
- Mechatronics
- Networks and telecommunications
- SLAM
- Analog circuits
- CAE analysis
- Power electronics
- Software
- Printed circuit boards
- Thermo-fluid design
- Panel production design
- Contents and data utilization
- LSI and FPGA
- EMC and safety certification
- High frequency design
- AI

Our comprehensive capabilities (ALL-MEE)

Through collaboration with businesses throughout Japan, we have brought together our cultivated technologies and expertise to provide high added-value technical services, products, and systems.



Technical service businesses

Utilizing the technologies we have developed as a technical partner of Mitsubishi Electric Corporation combined with our own advanced comprehensive capabilities, we offer complete manufacturing support from design and development to commercialization.

■ Development and design to support Mitsubishi Electric Group



Social infrastructure



Space/Defense/Information telecommunications



Home appliances

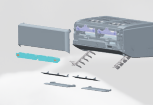
■ Design solutions



Electronic and electrical design



EMC and safety certification



Mechanical and structural design

■ e-Solutions & services



Support for engineering



Support for manufacturing



Support for sales and advertisement



Product and system businesses

Through design development in various fields, our goal is to create products born from unique ideas based on our comprehensive advanced technical capabilities. We are then able to sell such products through in-house brands.

■ FA/industrial and mechatronics systems and FA-related products



Power distribution equipment



Inspection and measurement systems



FA-related products

■ Social space ICT, imaging, surveillance, and HVAC equipment



Field LiDAR



Aerial touch display



Electronic refrigerators



Reception guide system "ComConCall"

Technical service businesses

Development and design to support Mitsubishi Electric Group

As a technical partner providing manufacturing support for Mitsubishi Electric Corporation and the Mitsubishi Electric Group, our focus is on development and design for such aspects as electricity, structure, functions, and production. We provide optimum design and support services related to development and design for products and systems in various fields ranging from household products for ordinary consumers to space development and social infrastructure technologies.

**Space/Defense/
Information
telecommunications**



Development and design of artificial satellites, satellite-mounted equipment, satellite communication equipment, defense equipment, optical communication equipment, radio/cable communication equipment, radar application equipment, and CCTV monitoring systems

**Power/
public utility
systems**



Development and design of power generation plants, substation facilities, power distribution systems, water supply and sewerage facilities, electrical transformers, and breakers

**Industrial
systems**



Development and design of monitoring control systems, power control systems, measurement control equipment, and power electronics equipment

**Building
systems**



Development and design of elevators, escalators, building management systems, and large-scale visual system equipment

**Traffic
systems**



Design and development of propulsion control systems, railway vehicle equipment, railway air conditioning systems, and automatic platform gates

**FA devices/
mechatronics**



Design and development of programmable controllers, servos, NC, inverters, HMI (graphic operation terminal), robots, laser machines, electric discharge machines, and e-F@ctory® systems

Automobiles



Development and design of engine electrical components, engine control equipment, power control for hybrid vehicles, and Advanced Driver-Assistance Systems (ADAS) products

**Living
environment**



Development and design of refrigerators, ventilating fans, air blowers, electric water heaters, freezing/refrigerating equipment, room air conditioners, and packaged air conditioners

**Research/
development**

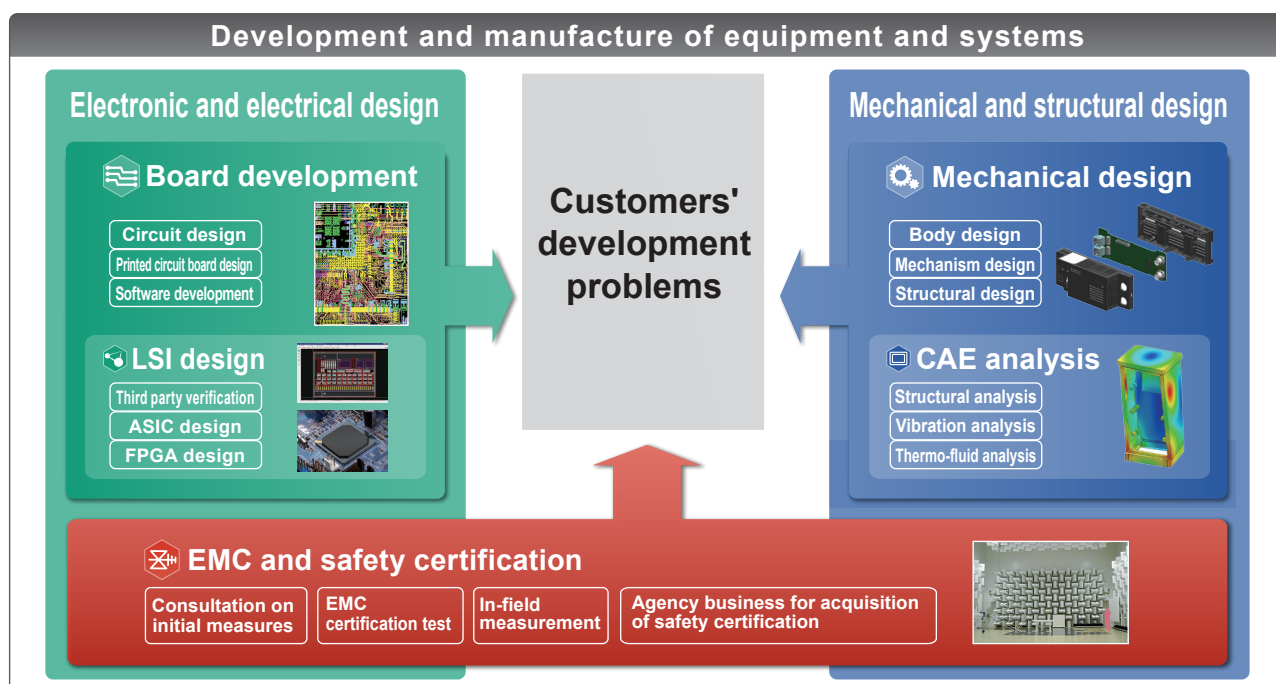


Development support, analysis, and evaluation designed to meet the needs of Mitsubishi Electric Corporation's research laboratories and centers

* e-F@ctory is a registered trademark of Mitsubishi Electric Corporation.

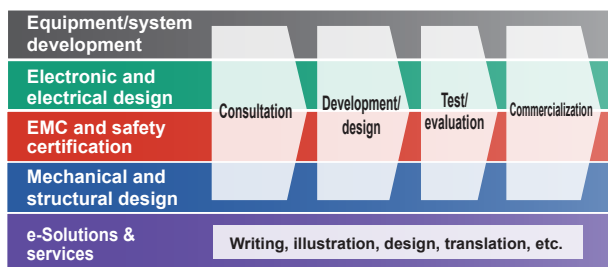
Design solutions

To solve development problems of our customers, we offer one-stop services ranging from consultation for development to design, evaluation, and commercialization of a wide variety of products including electronic equipment, optical equipment, and precision equipment. We offer such services by utilizing our own technologies in such fields as electric and electronic design, and mechanical and structural design.



One-stop service

To meet the needs of our customers, we offer total manufacturing support by combining proprietary core technologies.



We provide high-quality design services based on the proven product development capability and experience. We offer high-quality designs by making use of the latest design tools and by utilizing the experience and know-how we have accumulated as an engineering company for a major electronics manufacturer.

*1 LSI development: ASIC, FPGA, CPU and peripherals IP, analog LSI, etc.

*2 CAE: Computer Aided Engineering

*3 EMC: Electro-Magnetic Compatibility

Development and manufacture of equipment and systems

We offer reliable system development and manufacturing services. These services are provided to our customers through our products.

Board development

We provide comprehensive board solutions ranging from design to manufacture, component mounting, testing, and evaluation of circuits and printed circuit boards.

LSI design

We provide comprehensive solutions for LSI development(*1) ranging from study of required specifications to proposal, design, verification, synthesis, and hardware support.

Mechanical design

We provide comprehensive solutions related to structural, body, and mechanism design for home information appliances, industrial equipment, and image communications devices.

CAE analysis

We provide solutions utilizing CAE(*2), including analytical specifications study, results evaluation, and design proposals.

EMC and safety certification

We provide one-stop solutions ranging from support to establish EMC(*3) and anti-noise measures to acquisition and maintenance of safety certification.

Technical service businesses

e-Solutions & services

We provide one-stop services for the production, management, and utilization of information content necessary for any process within operations of the customer.

Support for engineering

- We plan and create appealing technical illustrations, VR content, educational tools, and development and design support tools, utilizing 3D-CG based on CAD and other engineering data.



VR-based accident simulation



Product simulation tool

- We cooperate with development and design divisions to provide one-stop services comprising planning of manuals and operation guides written and laid out in an easily understandable way; technical writing; technical illustration; translation; printing; and production of electronic manuals using websites and tablet devices.



Manuals

Support for manufacturing

- We visualize the operation status of the facilities and the work progress on the production lines by installing sensors and transmitters to the existing facilities.
- We offer problem solution and improvement measures at the stages of system development, system introduction, system maintenance, and system operation status analysis.



Support for sales and advertisement

- We produce appealing CG and movies for presentation of product functions, and plan and create promotional materials such as catalogs, websites, and promotional tools that work on tablet devices. We also support your cross-media marketing needs.
- We provide you with total support from planning and creation of promotional materials to development of application systems.



Video content display example (MeeTVISION)

Support for installation/maintenance

- We offer installation planning and verification services using IT tools that process point cloud data.
- We offer format input systems, shipment inspection systems, and marketing tools that are controllable via tablet devices.



Field operation support system

Support for work style reforms

- We support document management projects at the following stages: analysis of the present status, development of management scheme, configuration of document management system, and establishment of maintenance and management framework. Also, we offer document management systems that meet customers' demands, such as conversion of paper documents into electronic data.
- We deliver one-to-one catalogs and operation guides on demand in any quantity whenever needed. We offer on-demand printing and bookbinding services at our major business bases located nationwide.



Product and system businesses

FA/industrial and mechatronics systems

In response to the needs of various industries and mechatronics systems including factories, buildings, and plant facilities, we provide optimum solutions beginning with consultation.

Industrial system solutions

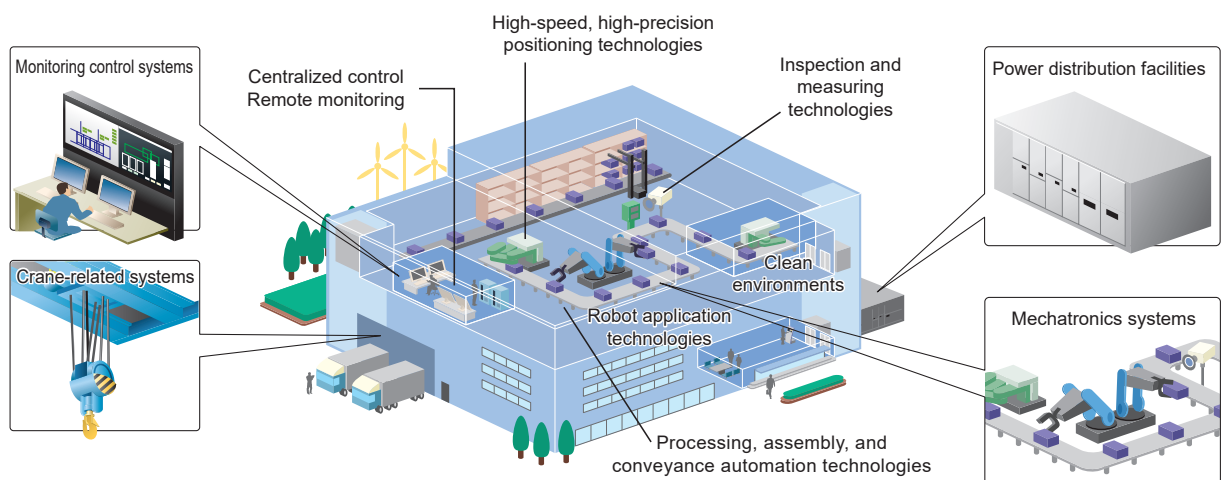
Investigation
and analysis

Planning and
proposal

Design and
manufacture

Start-up and
adjustment

Maintenance
and servicing



Power distribution and power control systems

We design and produce systems based on high-voltage distribution panels and combination panels and offer solutions for power distribution systems. We also provide various technical calculation services.

- High/low-voltage receiving and distribution panels (conforming to JEM 1425 and 1225)
- Various electrical motor control panels, control panels for generator-related equipment
- Power distribution control systems, motor control systems



Power distribution equipment

Conveyance driving systems

We provide systems consisting of combinations of control devices such as inverters and thyristors and peripheral devices such as motors and brakes used in steel and waste incineration plants and at seaports.

- Electric parts for cranes
- Coil-type motors and brakes for cranes
- Drive control systems (rotary presses, cable railways, etc.)



Crane-related systems

Monitoring control systems

To make factory operation (energy and production information) transparent, we offer optimal systems meeting customers' needs through factory investigation and analysis.

- Energy monitoring systems
- Energy saving analysis support systems
- Manufacturing execution systems (MES*)
- Instrumentation control systems
- Energy indication systems
- Power saving systems



Monitoring control systems

*MES: Manufacturing Execution System

Mechatronics systems

We provide proposals of dedicated devices and production lines and test and inspection systems that contribute to the enhancement of customers' productivity and product quality.

- Automation of assembly and conveyance
- Construction of robot application systems
- Construction of various test equipment
- Automation of visual inspections and auditory inspections
- Facilities maintenance services



Assembly and transfer system

AC/DC drive control systems

We provide energy-saving production line systems that utilize motor drives and peripheral devices.

- AC drive control systems
- DC drive control systems

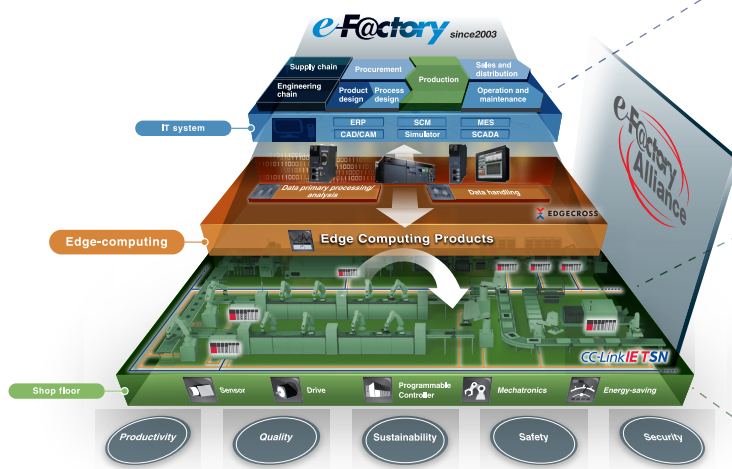
Audio/vibration analysis system (VisibleWave)

We visualize the characteristics of sounds and vibrations to apply them to the automated sensory test and the predictive failure diagnosis.

Product and system businesses

FA-related products

We offer support for the use of IoT in factories through Mitsubishi Electric's e-F@ctory® solutions, which makes full use of technologies to link FA and IT devices for next-generation manufacturing.



Source: Mitsubishi Electric Corporation

As an e-F@ctory® Alliance partner, we are working to achieve widespread adoption of e-F@ctory®-based smart factories.

FA systems

Provides a first step for shifting the role of the factory/building automation system from supervision to diagnostics.



Surveillance control system "e1-Works"

We support construction of the surveillance control system that uses Mitsubishi Electric's SCADA software, GENESIS64.

Network devices

Supports a wide variety of industrial networks and makes your factories IoT-ready.



RFID interface modules



Network interface units



FL-net interface units

Wire-saving and labor-saving devices

Offers a strong lineup of digital/analog devices and terminal blocks that contribute to "Work style reform."



Analog signal converters



Digital signal converters



Relay terminal block

Social space ICT equipment

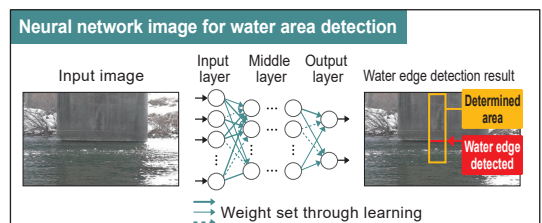
We offer solutions for various applications that aid in collecting on-site information and optimizing on-site work processes by integrating camera imaging data with distance information obtained from 3D laser scanners and other sources.



Mobile 3D scanner "Field LiDAR"



AI-based bar arrangement inspection terminal "Field Bar"



Deep learning-based water gauge "Field Edge"



Visual and monitoring security equipment

We provide a diverse selection of devices to cater to our customers' various needs, including office reception systems, aerial touch displays, monitors, built-in touch panel monitors for control panels.



Reception guide system "ComConCall"



Touch panel monitors



Aerial touch display

Air conditioning and heating/cooling equipment

We provide products, including electronic refrigerators for hotels and hospitals, created through the mobilization of a comprehensive range of technologies including freezing, refrigeration, air-conditioning, and cooling and heating control technologies.

Electronic refrigerators



Peltier-effect electronic refrigerators

Research and test equipment



Compact low-temperature incubators



Cool incubators

Air conditioning and heating/cooling equipment



Cooling units for electric discharge machines



Air conditioning servicing tools

Applied technology products

SineWave AE sensor

Produces sine waves in response to AE waves, enabling the monitoring of equipment and device degradation, as well as the detection of sudden unexpected events.

Medical-related equipment

Strength Ergo

Our servo control technology is utilized significantly in rehabilitation equipment.



Strength Ergo 240 Plus



Strength Ergo 8V2

Corporate information

Company profile

| | |
|-------------------------|---|
| Company name | Mitsubishi Electric Engineering Company Limited |
| Location of head office | 1-13-5 Kudankita, Chiyoda-ku, Tokyo |
| Date of establishment | February 1, 1962 |
| Capital | One billion yen |
| President | Yuzuru Saito |
| Number of employees | 5,496 (as of April 1, 2024) |
| Shareholder | Mitsubishi Electric Corporation (100%) |
| Sales | 115,9 billion yen (Fiscal 2023) |
| Corporate mission | We build up trust through human resources, technology, and quality. |
| Corporate statement | Develop a sustainable future supported by technology. |

Major business partners

Mitsubishi Electric Corporation
Mitsubishi Electric Building Solutions Corporation
TMEIC Corporation

Main banks

MUFG Bank, Ltd.
Mitsubishi UFJ Trust and Banking Corporation

On the road to sustainability

Our commitment

We build up trust through human resources, technology, and quality.

Mitsubishi Electric Group

Purpose

We, the Mitsubishi Electric Group, will contribute to the realization of a vibrant and sustainable society through continuous technological innovation and ceaseless creativity.

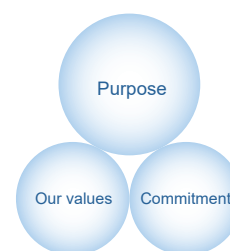
Our values

Trust Quality Technology Ethics and Compliance Humanity Environment Society

Commitment

Changes for the Better

"Changes for the Better" represents the Mitsubishi Electric Group's attitude to "always strive to achieve something better," as we continue to change and grow. Each one of us shares a strong will and passion to continuously aim for change, reinforcing our commitment to creating "an even better tomorrow."



Contribute to the SDGs

Our company strives to address social issues through the SDGs initiatives of the Mitsubishi Electric Group, as well as our own unique initiatives to promote the SDGs.

(1) Priority SDGs initiatives of the Mitsubishi Electric Group

Goal 3: Good Health and Well-being
Goal 7: Affordable and Clean Energy
Goal 9: Industry, Innovation, and Infrastructure

Goal 11: Sustainable Cities and Communities
Goal 13: Climate Action

(2) Our unique SDGs initiatives

Through our role and mission as a core engineering company that supports the Mitsubishi Electric Group, we aim to achieve four goals based on our corporate philosophy.

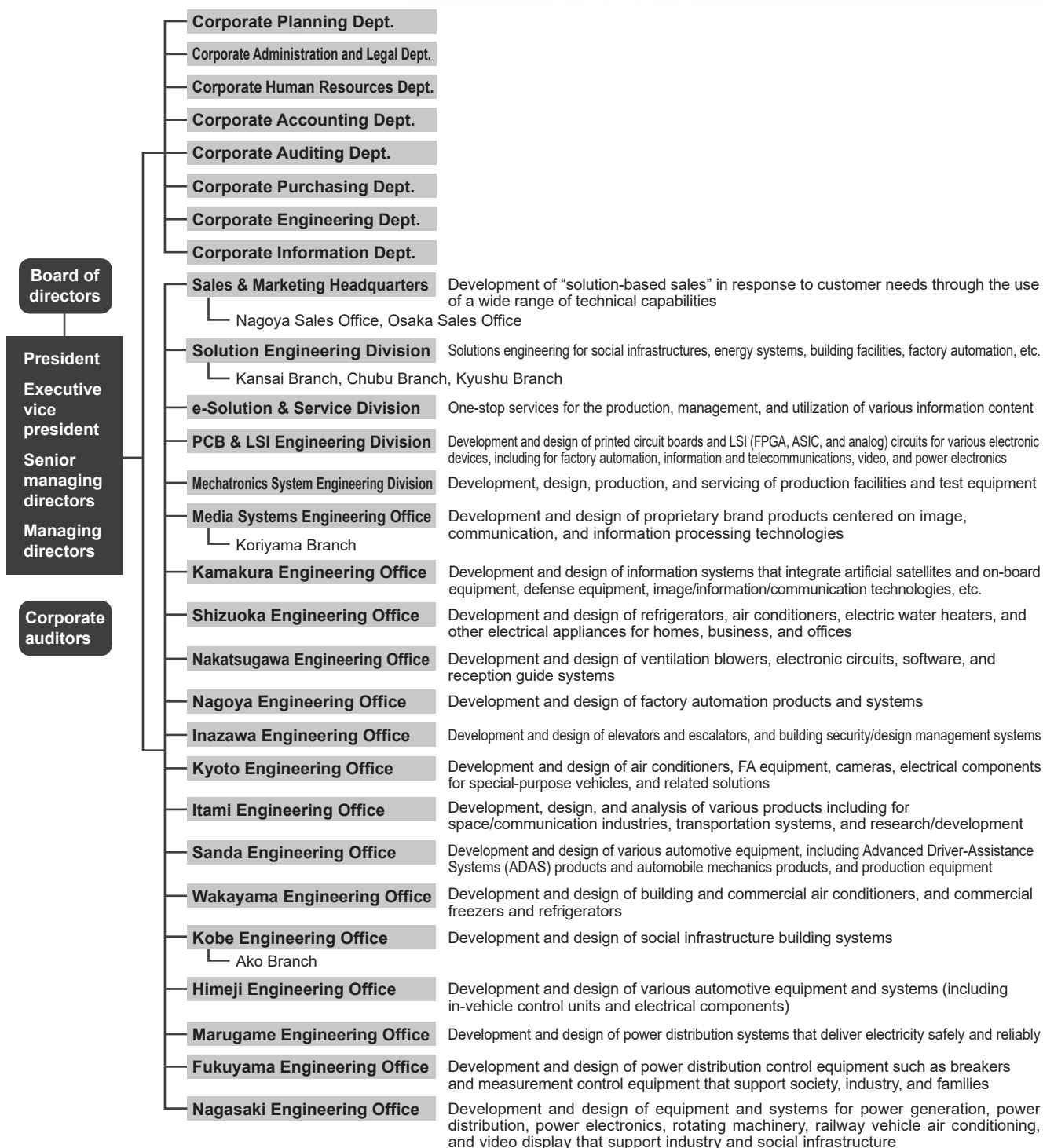
Implementation of the human resource development policies that contribute to each individual's vision of the future.
Goal 4: Provide high quality training for all employees.

Create a working environment where all employees are engaged and enthusiastic about their work.
Goal 5: Achieve gender equality.

Realize job satisfaction and provide high added-value through our technology.
Goal 8: Achieve job satisfaction and economic growth.

Strengthen environmentally friendly design and reduce CO₂ emissions from business activities.
Goal 12: Be responsible to customers in terms of both production and consumption.

Organization (As of April 1, 2024)



Subsidiaries

Diamond Personnel Co. Ltd.

Established in 1998. Engaged in temporary personnel service and job placement service for Mitsubishi Electric Group.

mitsubishi electric engineering company limited

1-13-5, Kudankita, Chiyoda-ku, Tokyo, 102-0073, Japan Phone +81-3-3288-1101

<https://www.mee.co.jp/>

This corporation information contains our domestic businesses only.

All company and product names herein are either trademarks or registered trademarks of their respective owners.